

Outdoor ground covering

- TERRACE



WOOD

TWINSON® ***BEST OF BOTH WORLDS***

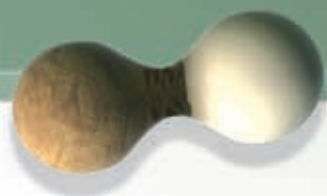
Welcome to the world of Twinson®, where nature and technology go hand in hand.

Twinson® is made of wood and PVC. By combining the advantages of both materials in a single new base material, Twinson® gives you the best of both worlds - the natural appearance and warm feel of wood as well

as the low-maintenance durability of PVC.

Twinson® is 100% recyclable - as well as being an environmentally friendly alternative to hardwood. While hardwood is only available in the threatened rain forests, Twinson® contains pine, which grows quickly in forests that are continually being replanted.

PVC



TWINSON[®] combines all the advantages of wood and PVC:



- | | |
|----------------------------|----------------------------------|
| ● natural appearance | ● durable |
| ● splinter free | ● low maintenance |
| ● resistant to insects | ● water resistant |
| ● does not warp | ● easy to fit |
| ● does not split | ● assembly with concealed system |
| ● environmentally friendly | ● not slippery, even in rain |

The general conditions with regard to warranty are applicable.






- **TERRACE**

YOUR COMFORT IS ASSURED

Twinson® gives you all the benefits of wood while enjoying the unique properties of PVC. By combining wood and PVC in a single new base material, -Terrace meets all the comfort demands you make of your patio planks. Water resistant and robust, low maintenance and attractive: -Terrace has everything!

Twinson® combines the warm feel of wood and the durability of PVC. Thanks to the natural

appearance, -Terrace planks blend in perfectly with your garden. With Twinson®'s water resistance, your patio is guaranteed to stay like new, since -Terrace is **splinter and split free** and **does not warp**.

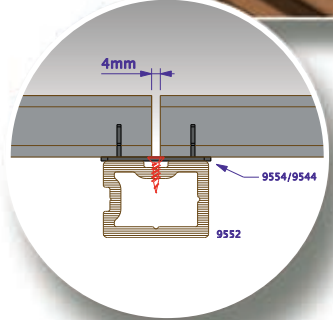
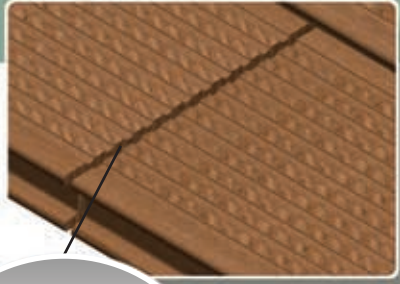
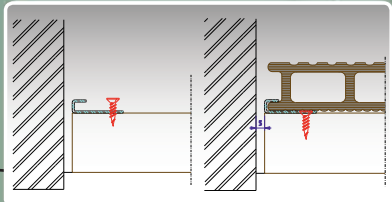
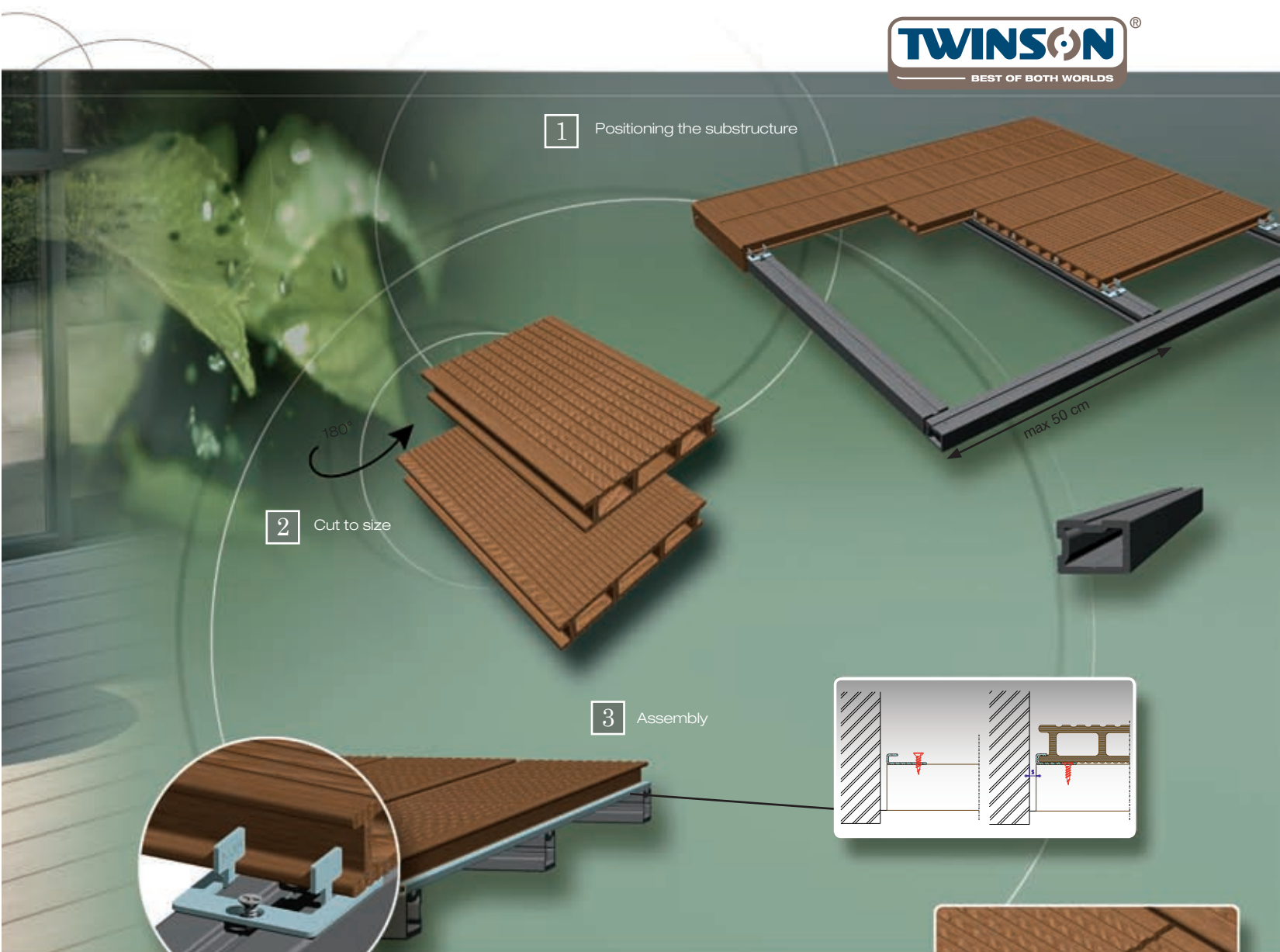
From garden path to pond-edge, from patio to pool-side: with -Terrace you'll enjoy it all the more.

1 Positioning the substructure

2 Cut to size

3 Assembly

4 Finished **⊙**-Terrace



⊙ - TERRACE
***YOUR CONVENIENCE
TO THE FORE***

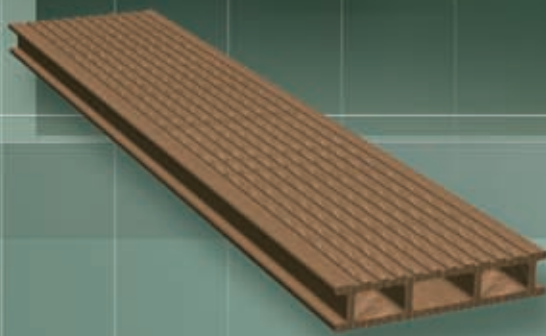
TWINSON® POWER TO YOUR IMAGINATION

With Twinson® you can give your creativity free reign. From formal design to fanciful geometric shapes, with Twinson® you can achieve anything!

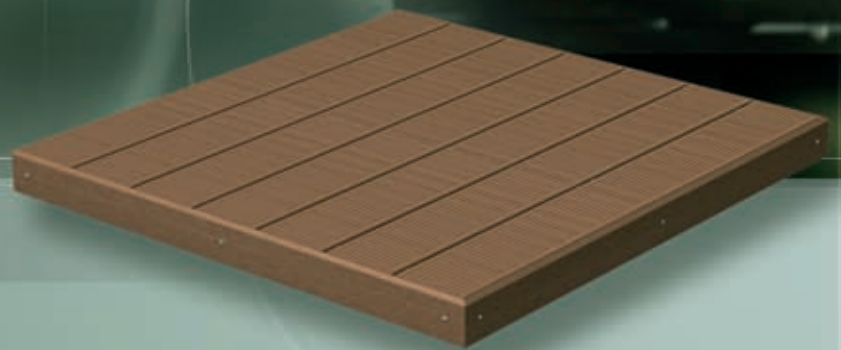
🔗 Terrace patio planks and finishing trim are

available in 8 different natural colours from almond beige to liquorice black.

With Twinson®, you can transform your patio or garden into a stylishly finished environment that you can enjoy for years to come.

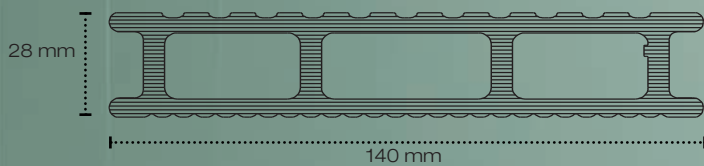


P 9555



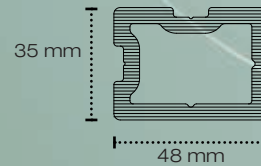
P 9552

P 2754



P 9556

P 2761

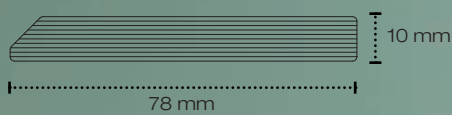


P 9554/P 9544

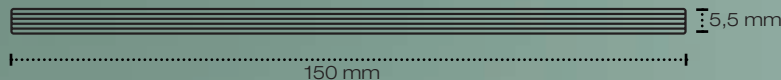
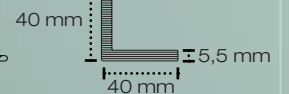
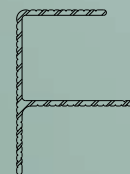
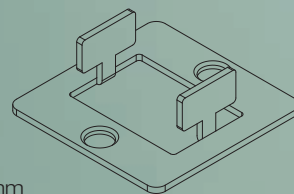
P 9543



P 9591
P 9592



P 9590



0501



ALMOND BEIGE

0507



OLIVE GREEN

0509

NEW



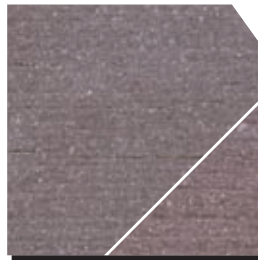
RIVERSTONE GREY

0506



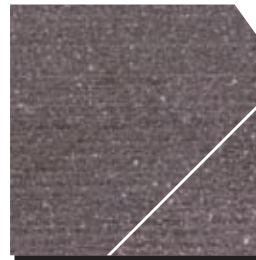
APRICOT BROWN

0503



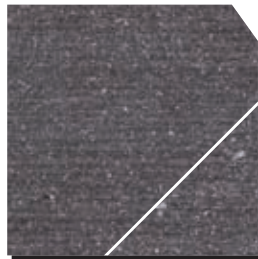
HAZELNUT BROWN

0504



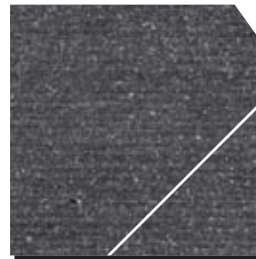
BARK BROWN

0505




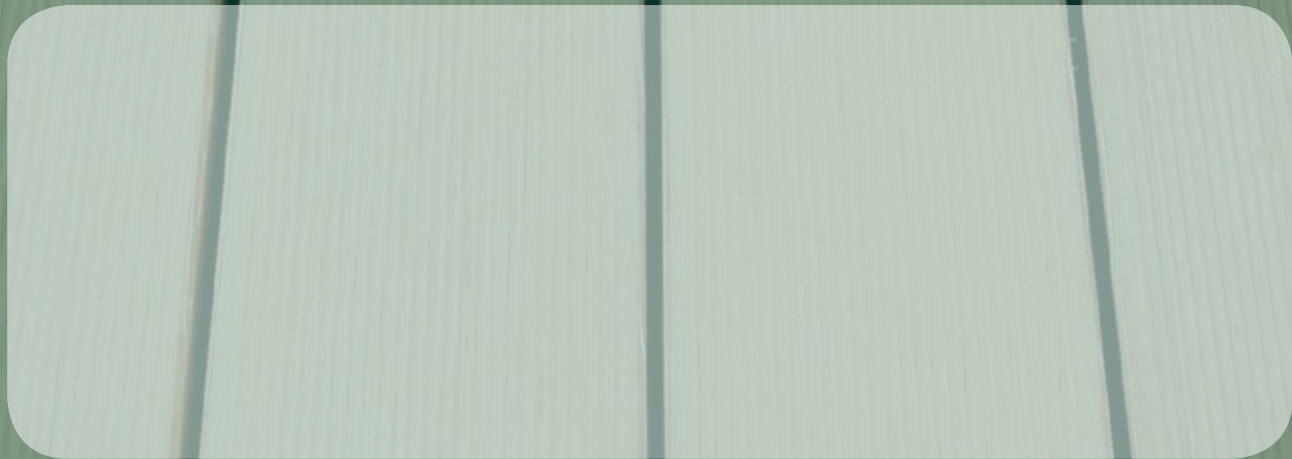
TURF BROWN

0502



LIQUORICE BLACK

The colour samples are reproductions and can deviate from the originals.
The triangle shows the natural tint which the -Terrace planks acquire in time.



05/07 83300 - 9000 - 8104 The content of this document, photographic reproduction and technical details remain the sole property of Deceuninck Nv, all rights reserved. It cannot be reproduced, in whole or in part, without our explicit permission. Terms & conditions of sale apply, a copy of which is available on request.

www.twinson.net

